

倾翻架

HINGED FORKS



应用范围:

广泛应用于物品回收、肥料、冶炼铸造、塑料颗粒等需要对料斗倾翻的行业。

Applications:

Widely used recycle, fertilizer, smelting and casting, plastic particles and other industries need to tipping operations.

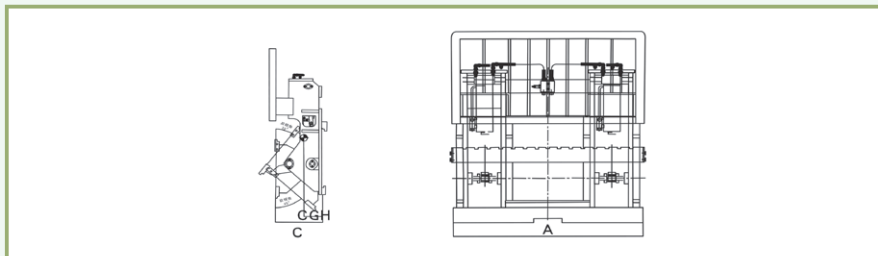
产品特点:

- 高强度全钢结构设计，满足用户高效率连续作业
- 前倾角 45°，后倾角 35°，最大限度满足客户工作要求
- 设计合理，美观大方，采用世界上最优质的液压元件

Features:

- Rugged all-steel construction, meet the requirements for continuous operation with high efficiency.
- Forward angle 45°, backward angle 35°
- Reasonable design with dependable world top quality hydraulic components.





倾翻架 *Hinged Forks*

型号 Model	载重能力/ 载重中心 Capacity/ Load Centre (kg/mm)	横梁宽度 Frame Width A (mm)	失载距 Effective Thickness C (mm)	水平重心 Horizontal Center of Gravity CGH (mm)	自重 Weight (kg)	前/后倾角 Forward/ Backward Angle (°)	安装等级 (倾翻架/货叉) Mounting Class (Hinged Forks / Tine)
G08B20-110A22	2000/500	1100	385	230	280	45/25	2/2
G08B30-110B33	3000/500	1100	390	240	290	45/25	3/3

注:

1. 叉车要求增加一组附加油路;
2. 以上产品型号为常用产品, 可根据实际工况要求提供相应产品。

Note:

1. One additional hydraulic circuit required on truck.
2. All products as listed are standard, custom products can be provided according to detailed requirements.

